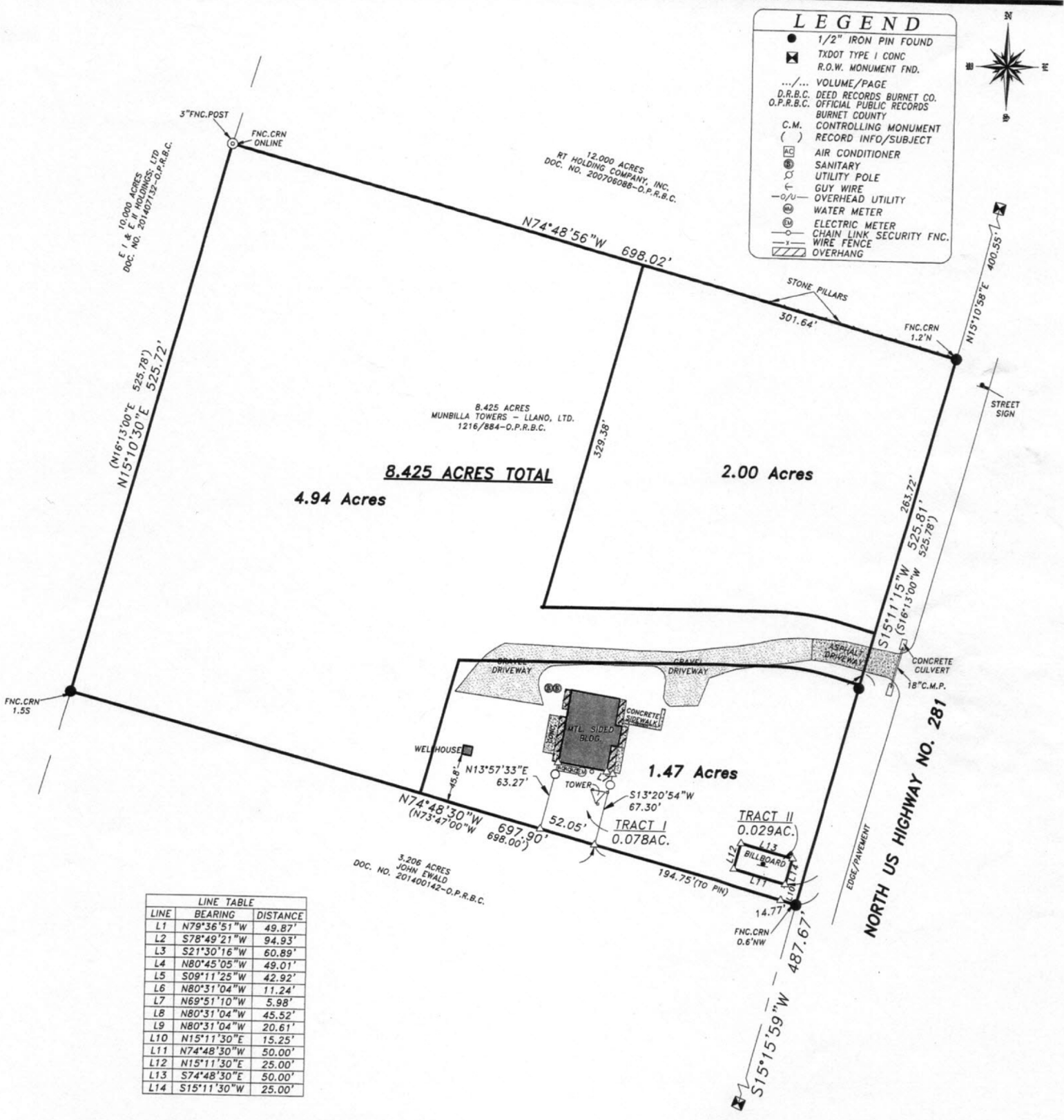


LEGEND

- 1/2" IRON PIN FOUND
- ⊠ TXDOT TYPE I CONC R.O.W. MONUMENT FND.
- .../... VOLUME/PAGE
- D.R.B.C. DEED RECORDS BURNET CO.
- O.P.R.B.C. OFFICIAL PUBLIC RECORDS BURNET COUNTY
- C.M. CONTROLLING MONUMENT RECORD INFO/SUBJECT
- () RECORD INFO/SUBJECT
- AC AIR CONDITIONER
- ⊕ SANITARY
- ⊕ UTILITY POLE
- ⊕ GUY WIRE
- ⊕ OVERHEAD UTILITY
- ⊕ WATER METER
- ⊕ ELECTRIC METER
- ⊕ CHAIN LINK SECURITY FNC.
- ⊕ WIRE FENCE
- ▨ OVERHANG



LINE TABLE		
LINE	BEARING	DISTANCE
L1	N79°36'51"W	49.87'
L2	S78°49'21"W	94.93'
L3	S21°30'16"W	60.89'
L4	N80°45'05"W	49.01'
L5	S09°11'25"W	42.92'
L6	N80°31'04"W	11.24'
L7	N69°51'10"W	5.98'
L8	N80°31'04"W	45.52'
L9	N80°31'04"W	20.61'
L10	N15°11'30"E	15.25'
L11	N74°48'30"W	50.00'
L12	N15°11'30"E	25.00'
L13	S74°48'30"E	50.00'
L14	S15°11'30"W	25.00'

3.206 ACRES
JOHN EWALD
DOC. NO. 201400142-O.P.R.B.C.

12.000 ACRES
RT HOLDING COMPANY, INC.
DOC. NO. 200706085-O.P.R.B.C.

8.425 ACRES
MUNBILLA TOWERS - LLANO, LTD.
1216/884-O.P.R.B.C.

8.425 ACRES TOTAL
4.94 Acres

2.00 Acres

1.47 Acres

TRACT I
0.078 AC.

TRACT II
0.029 AC.

NORTH US HIGHWAY NO. 281